

APPLICATION

The Harmony LA 300 Examination Lighting System, available in three configurations, provides cool, color-corrected light for examination, treatment, critical care, and emergency areas.

DESCRIPTION

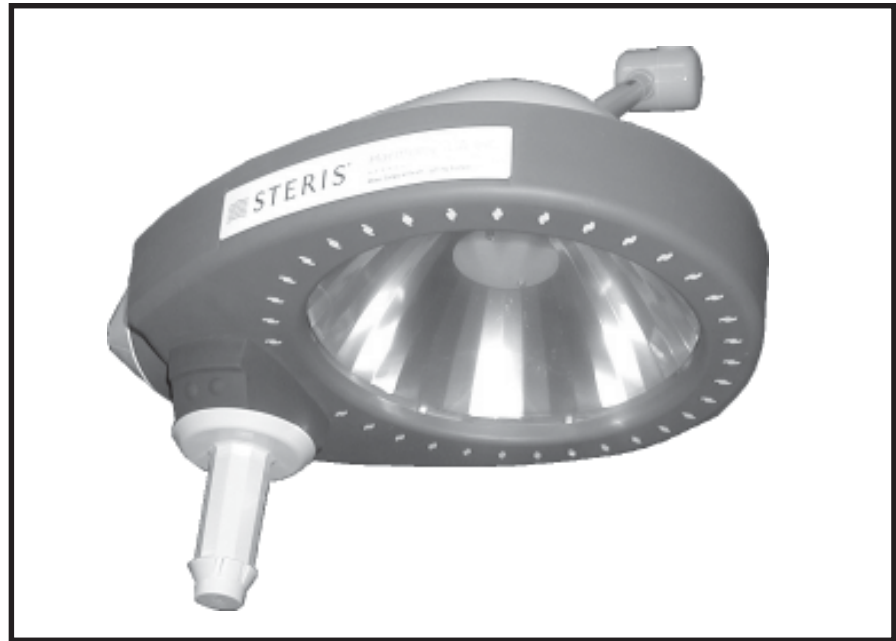
The Harmony LA 300 Examination Lighting System provides high quality illumination for examination applications. Lighting intensity level is adjustable with push button controls on the bezel on the lighthead.

Available configurations include a ceiling mounted system, wall mounted system and a mobile stand.

The ceiling mounted system has the same mounting pattern as the Amsco® Examiner® 10 Examination Lighting System. This allows the Examiner 10 light to be easily upgraded, as long as the ceiling structure meets the requirements outlined in the equipment drawing.

LIGHTING SYSTEM CONFIGURATIONS

Ceiling Mounted System is suspended on a seamless, vertical tube (cut to size by a third party). The horizontal extension arm slips onto the lower end of the vertical tube and is



(Typical only - some details may vary.)

secured by an external retaining ring. The upper end of the vertical tube is secured by two sets of heavy-duty setscrews to a ceiling plate and hub. A canopy is furnished to conceal the mounting plate and power supply.

The vertical tube may be cut to length to suit various ceiling heights. STERIS recommends a minimum ceiling height of 7' 10-1/4" (2394 mm) to maximum ceiling height of 10' 0" (3048 mm). The ceiling mounted unit is equipped with a single 31-1/2" (800 mm) horizontal extension arm, supporting a standard

Harmony LA 300 spring arm and lighthead. This allows for an approximate 6' 6" (1981 mm) radial coverage area.

Wall Mounted System is furnished with a predrilled mounting bracket assembly. The same horizontal extension arm and spring arm used on the ceiling mounted system are used for the wall mounted system. With this type of mounting, the lighthead can be folded close to the wall, when not in use, to optimize space in the examination area.

The Selections Checked Below Apply To This Equipment

CONFIGURATION

- Ceiling Mounted**
 - Ceiling plate, vertical tube, 31-1/2" (800 mm) horizontal suspension arm, and a standard Harmony LA 300 spring arm and lighthead.
- Wall Mounted**
 - 31-1/2" (800 mm) horizontal suspension arm, and a standard Harmony LA 300 spring arm and lighthead.
- Mobile Floor Stand Fixture**
 - 22-1/4" x 22" (565 x 558 mm) base, 69" (1752 mm) high vertical stand with a standard Harmony LA 300 spring arm and lighthead

ACCESSORIES

- Sterile Handle Kit
(one required for each lighthead)

Item _____
 Location(s) _____

The Mobile Stand System consists of a vertical support tube, spring arm, lighthouse and base. The system is supported by a sturdy base with rear mounted lockable, ball-bearing casters. The stand is 69" (1732 mm) in height with a 22-1/4" x 22" (565 mm x 558 mm) base. Mobile stand includes a 20' (6096 mm) power cord. The handle also acts as a cord wrap.

STANDARDS

All components of the lighting system meet the applicable requirements of the following standards and/or regulations and carry the appropriate symbols.

- **UL Standard 60601-1:** UL Standard for Safety. Medical Electrical Equipment, Part I: General Requirements for Safety, First Edition.
- **CAN/CSA-22.2 No. 601.1-M90:** Medical Electrical Equipment, Second Edition, Part I: General Requirements for Safety. General Instruction No. 1; Supplement 1; 1994 R (1997).
- **IEC/EN 60601-1:** Medical Electrical Equipment, Part I: General Requirements for Safety, Incorporates: Corrigendum July 1994; Includes Amendments A1: 1993, A11: 1993, A12: 1993, A2: 1995 and A13: 1996, IEC 601-1: 1988 plus A1: 1991 plus A2: 1995 plus Corrigendum 1995 Modified.
- **IEC/EN 60601-1-2:** Medical Electrical Equipment, Part 1-2: General Requirements for Safety. Collateral Standard: Electromagnetic Compatibility-Requirements and Tests.
- **IEC 60601-2-41:** First Edition, 3000-02: Medical Electrical Equipment, Part 2-41: Particular Requirements for the Safety of Surgical Luminaires and Luminaires for Diagnosis.
- **Medical Device Directive (93/42/EEC):** Compliance for CE Marking.
- **AAMI 11607:1997:** Packaging for Terminally Sterilized Medical Devices. (Sterility).

FEATURES

Each lighthouse provides color corrected, naturally appearing white light with a color rendering index of 94 and a color temperature of 4,400 Kelvin. Lighthouse optics filter out potentially harmful ultraviolet and infrared radiation and dissipate heat away from the examination field.

Illumination intensity is adjustable at the lighthouse from approximately 2,200 to 5,500 footcandles (24,000 to 59,000 lux) by using the pushbutton controls located on the bezel. The lighthouse is equipped with a continuous non-sterile grasping surface for positioning the lighthouse.

Lightweight suspension system is designed for limitless and continuous lighthouse positioning without binding or drifting.

Modular suspension. State-of-the-art electrical connectors allow lighthouse reconfiguration within the limits of the installed suspension arms. Lighthouse can be removed and replaced as required.

CONSTRUCTION

The optical system consists of a single light source with a heat transmitting and color correcting filter. Lighthouse is constructed of lightweight, durable materials. The Harmony LA 300 lighthouse uses a 100 Watt, 22 Volt tungsten halogen lamp filled with xenon gas for improved lamp life.

The lighthouse reflector is thin-film coated for color correction and heat dissipation.

The lens is molded of optical grade high impact polycarbonate material. The lens is sealed into the lighthouse to prevent the accumulation of dust on the system's optics.

The lighthouse spring arm has an adjustable counterbalance mechanism for effortless vertical positioning. Electrical commutators, located within the suspension system, transmit power and control signals while providing continuous rotation. The lighthouse yoke rotation points include adjustable brakes to maintain lighthouse position.

OPTIONS

All Harmony LA Examination Lighting Systems are designed to conform with seismic installation requirements.

STANDARD ACCESSORIES

Sterile disposable covers for standard lighthouse handle allow members of the examination team to grasp and adjust standard lighthouse handle, while allowing access to lighthouse controls and minimizing any compromise to a sterile examination area.

PREVENTIVE MAINTENANCE

A global network of skilled service specialists can provide periodic inspections and adjustments to help ensure low-cost peak performance. STERIS representatives can provide information regarding annual maintenance agreements.

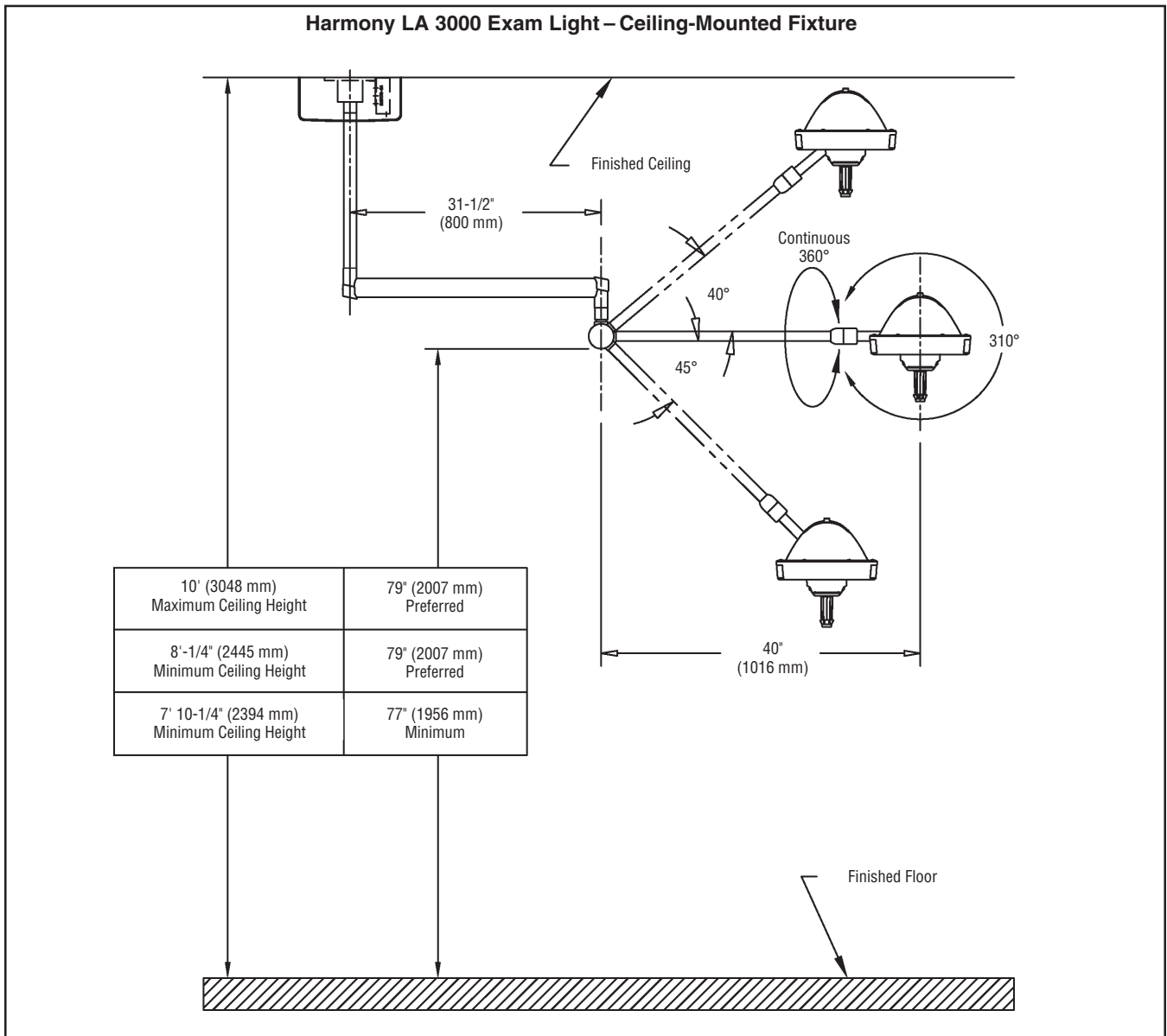
SUPPORT STRUCTURE

The ceiling and wall structure – installed by a third party prior to installing the lighting system – must be level and must adequately support the light system configuration to be installed. The data provided shows the loads and moments for the Harmony LA 300 lighthouses when installed. Consult the equipment drawing for further details.

**STERIS Corporation,
Montgomery, Alabama is an
ISO 13485 certified facility.**

The base language of this document is ENGLISH. Any translations must be made from the base language document.

**Dimensions shown here are typical, and subject to change without notice.
REFER TO STERIS EQUIPMENT DRAWINGS FOR
COMPLETE AND DETAILED INSTALLATION SPECIFICATIONS.**

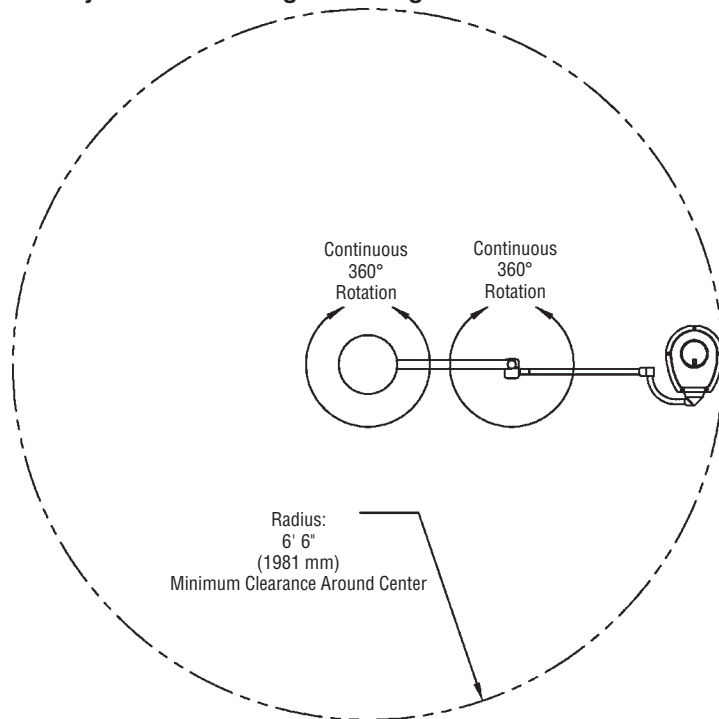


Mounting Arrangement	Mounted Weight* lbs (kg)	Moment Force lb-ft (kg-m)
Ceiling-Mounted	100 (46)	110 (149)
Wall-Mounted	55 (25)	110 (149)

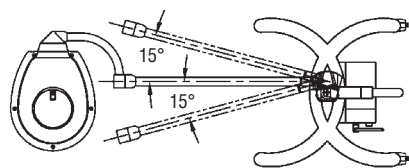
* Includes weight of lighthead.

**Dimensions shown here are typical, and subject to change without notice.
REFER TO STERIS EQUIPMENT DRAWINGS FOR
COMPLETE AND DETAILED INSTALLATION SPECIFICATIONS.**

Harmony LA 300 Exam Light – Ceiling-Mounted Fixture Clearance

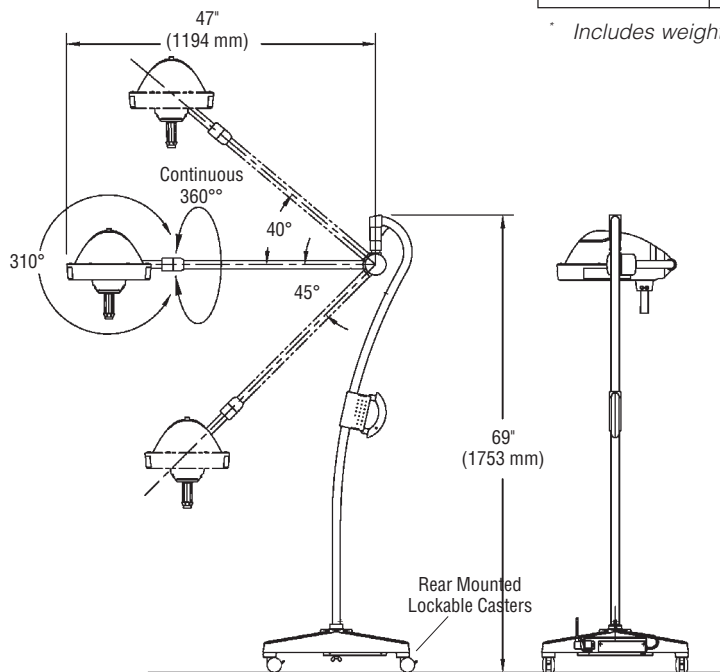


Harmony LA 3000 Exam Light – Mobile-Stand Mounted Fixture



MOBILE FLOOR STAND FIXTURE		
Stand Height inches (mm)	Base Size inches (mm)	Approximate Total Weight* lbs (kg)
69 (1753)	22-1/4 (565)	76 (35)

* Includes weight of lighthouse.



NOTES

Important: Reference equipment drawings for detailed installation requirements. This document is not intended as a complete pre-installation or planning guide.

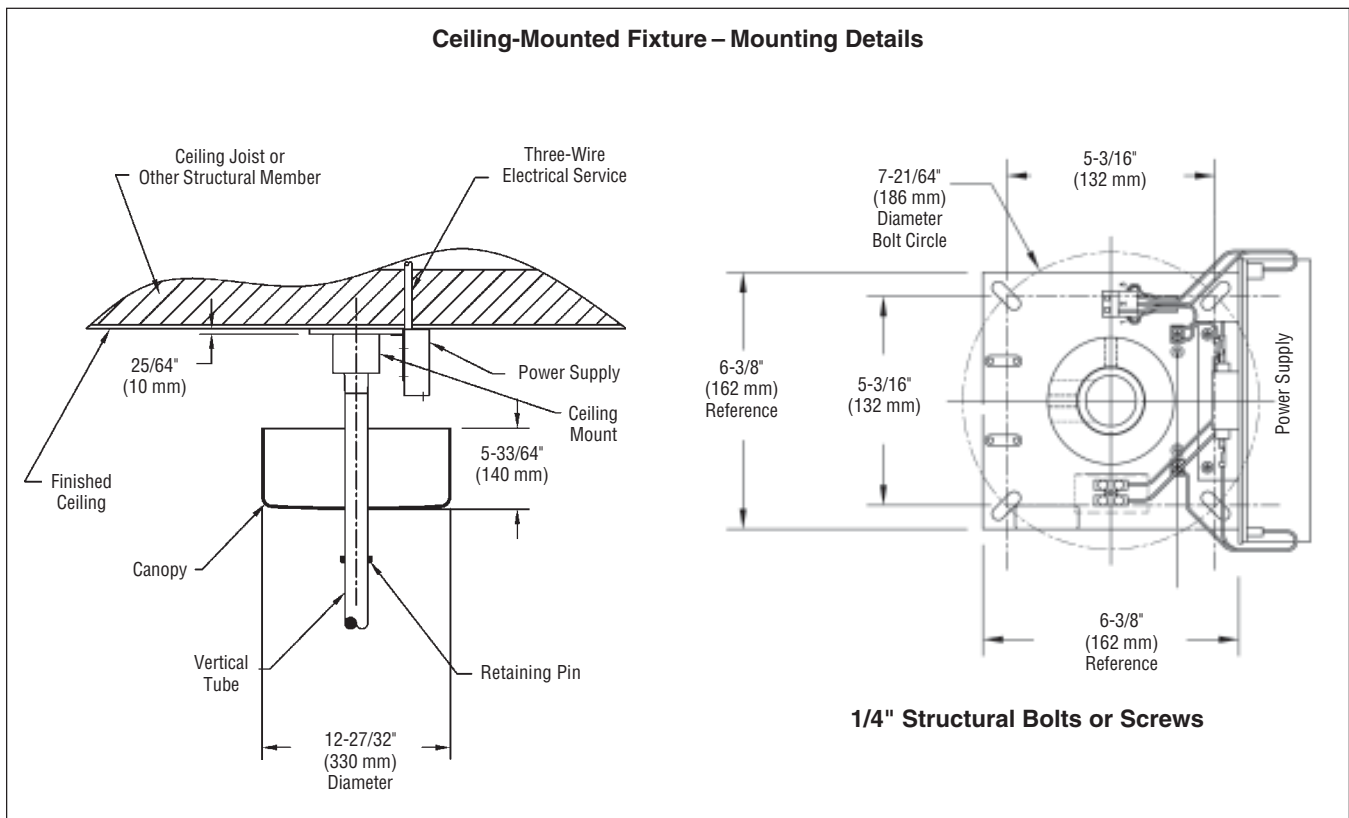
1. Ceiling support structure must adequately support light system which weighs and exerts a moment as indicated in equipment drawing.
2. Leveling nuts compensate for ceiling irregularities (nuts not provided by STERIS).
3. Fixture must be grounded. Adequate ground must be provided by running a separate ground wire to ceiling structure.
4. STERIS recommends general illumination in an examination room of 200 footcandles (2152 lux) at the examination site.
5. **Explosion Hazard** – Do not use in the presence of flammable anesthetics.

UTILITY REQUIREMENTS

Electricity – Systems are compatible with the following rating: 90-264 VAC, 50/60 Hz., 3.2 Amps. Current leakage is limited to less than 300 microamperes.

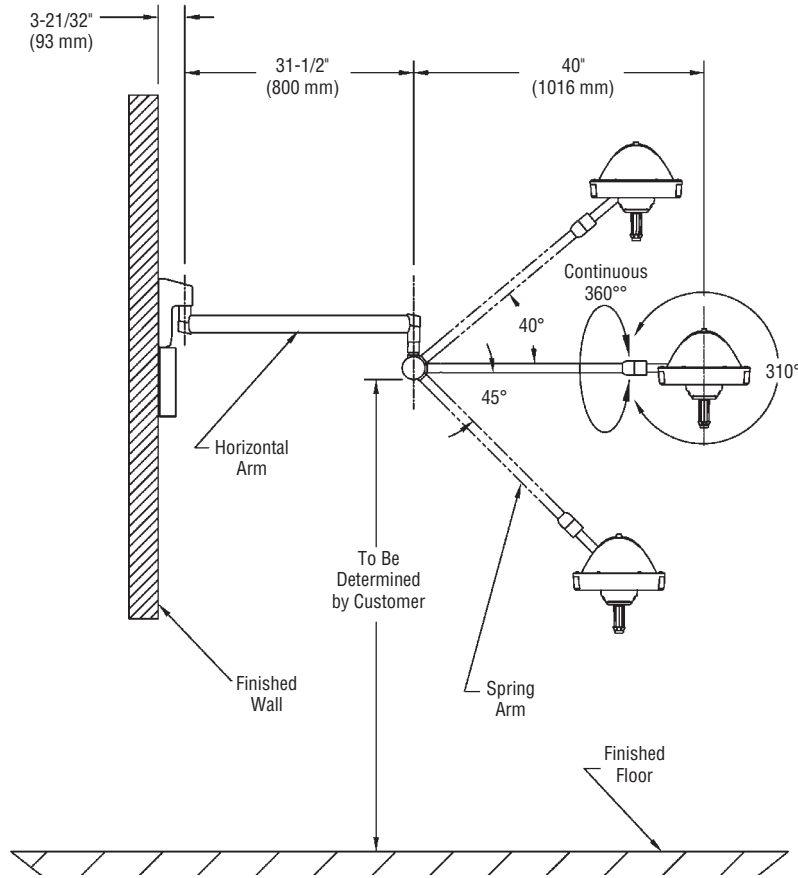
CUSTOMER IS RESPONSIBLE FOR COMPLIANCE WITH APPLICABLE LOCAL AND NATIONAL CODES AND REGULATIONS.

Dimensions shown here are typical, and subject to change without notice. REFER TO STERIS EQUIPMENT DRAWINGS FOR COMPLETE AND DETAILED INSTALLATION SPECIFICATIONS.

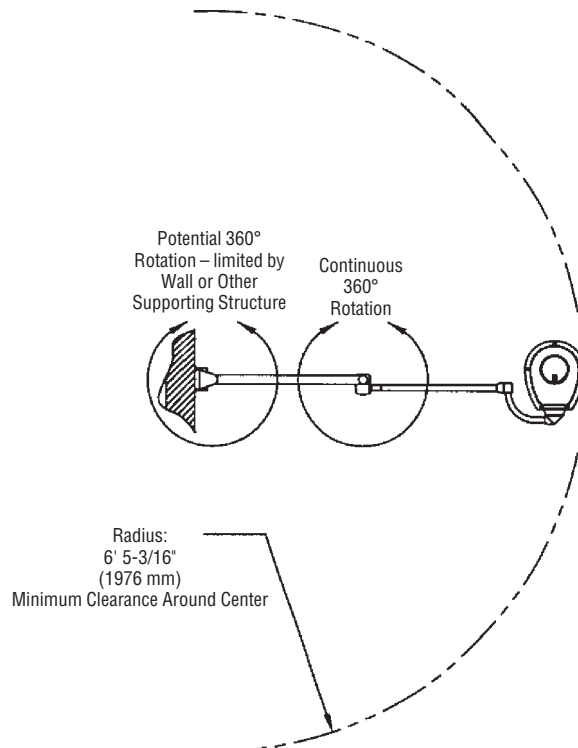


**Dimensions shown here are typical, and subject to change without notice.
REFER TO STERIS EQUIPMENT DRAWINGS FOR
COMPLETE AND DETAILED INSTALLATION SPECIFICATIONS.**

Harmony LA 300 Exam Light – Wall Mounted Fixture

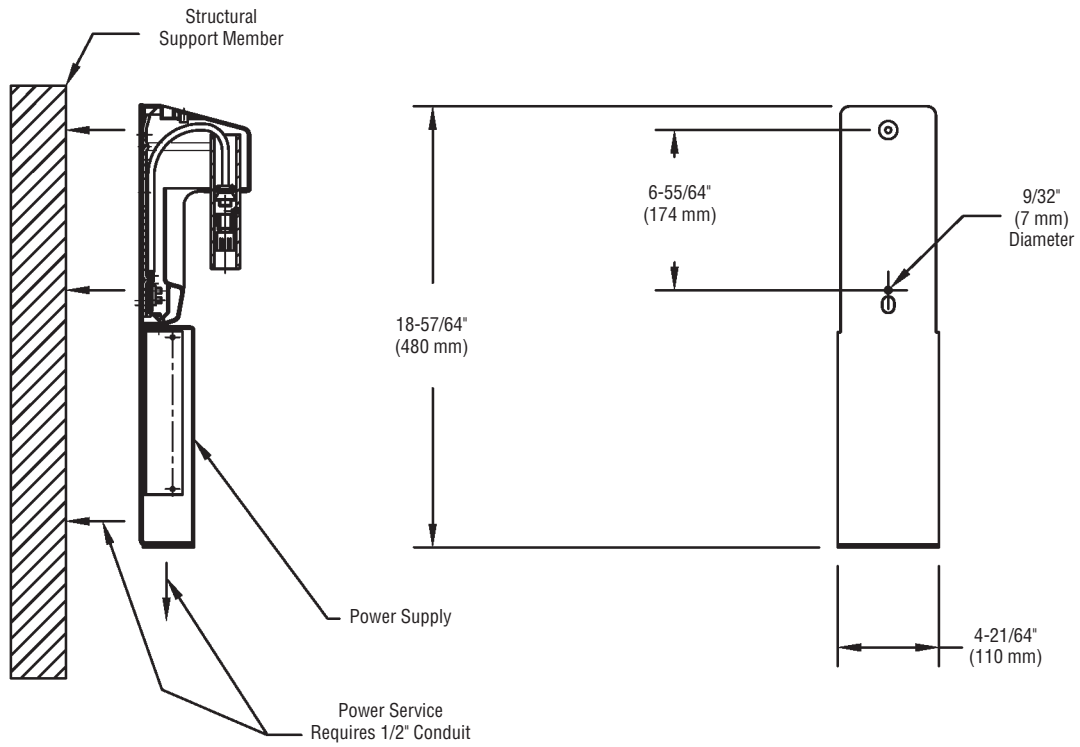


Harmony LA 300 Exam Light – Wall-Mounted Fixture Clearance



**Dimensions shown here are typical, and subject to change without notice.
REFER TO STERIS EQUIPMENT DRAWINGS FOR
COMPLETE AND DETAILED INSTALLATION SPECIFICATIONS.**

Wall-Mounted Fixture – Mounting Details



Configuration for 1/4" (6.35 mm) Mounting Screws

For further information, please contact:

STERIS®



STERIS Corporation
5960 Heisley Road
Mentor, OH 44060-1834 ▪ USA
440-354-2600 ▪ 800-548-4873
www.steris.com